

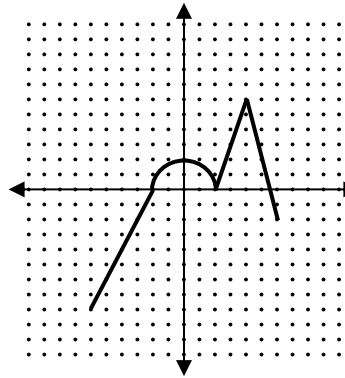
PreAP Precal 1.6 Part II: Transformations with a Table

Fill in all the blanks for which you have sufficient information.

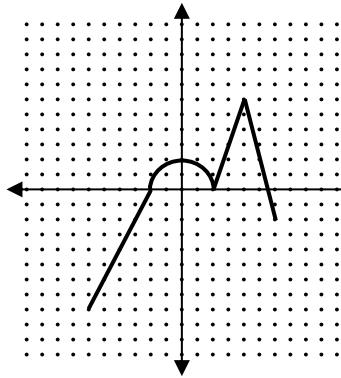
	x	-6	-4	-2	0	2	4	6
	<i>f(x)</i>	-8	-4	0	2	0	6	-2
1)	$f(x) - 2$							
2)	$f(x - 2)$							
3)	$f(x) + 2$							
4)	$f(x + 2)$							
5)	$-f(x)$							
6)	$f(-x)$							
7)	$2f(x)$							
8)	$f(2x)$							
9)	$\frac{1}{2} f(x)$							
10)	$f(\frac{1}{2} x)$							

The original function is graphed. Graph the transformed function. How did it change?

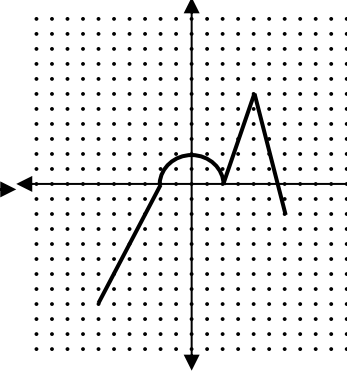
1) $f(x) - 2$



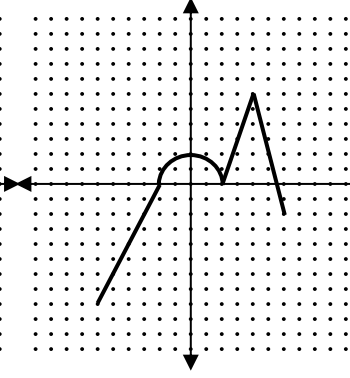
2) $f(x - 2)$



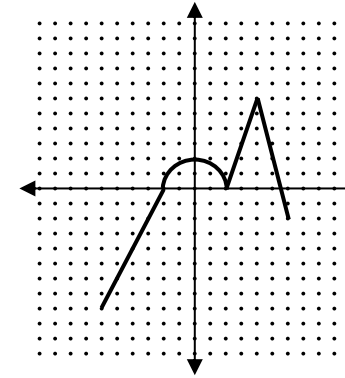
3) $f(x) + 2$



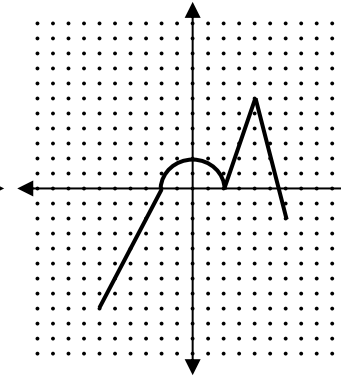
4) $f(x + 2)$



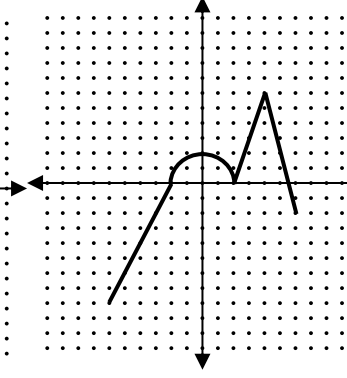
5) $-f(x)$



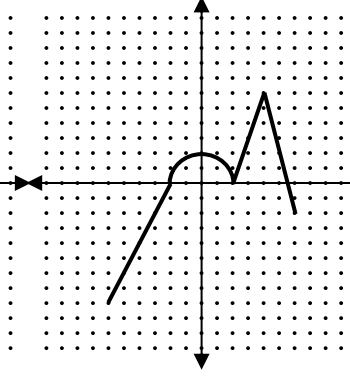
6) $f(-x)$



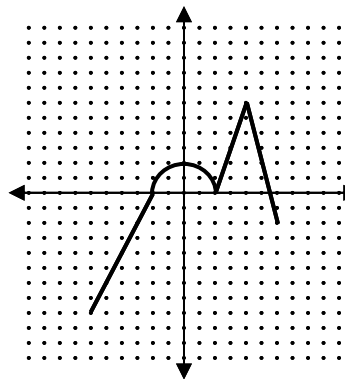
7) $2f(x)$



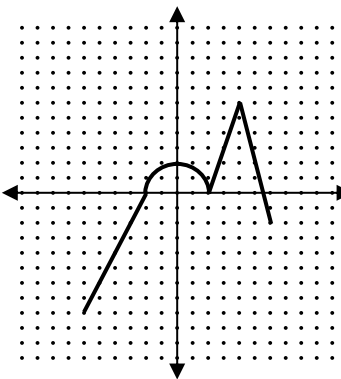
8) $f(2x)$



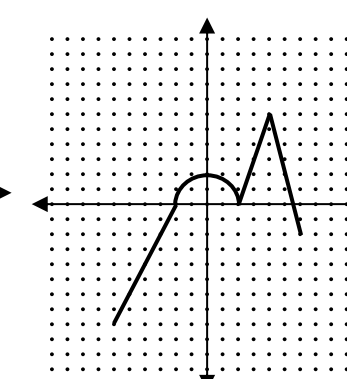
9) $\frac{1}{2} f(x)$



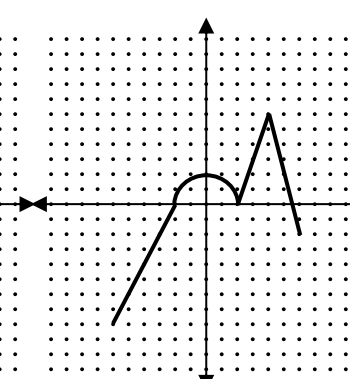
10) $f(\frac{1}{2} x)$



11) $|f(x)|$



12) $f(|x|)$



BIG IDEAS

Operations that occur after (outside) the function affect the _____.

$$y = a f(b(x - h)) + k$$

Operations that occur before (inside) the function affect the _____.

Absolute value: $|f(x)|$ _____.

$f(|x|)$ _____.